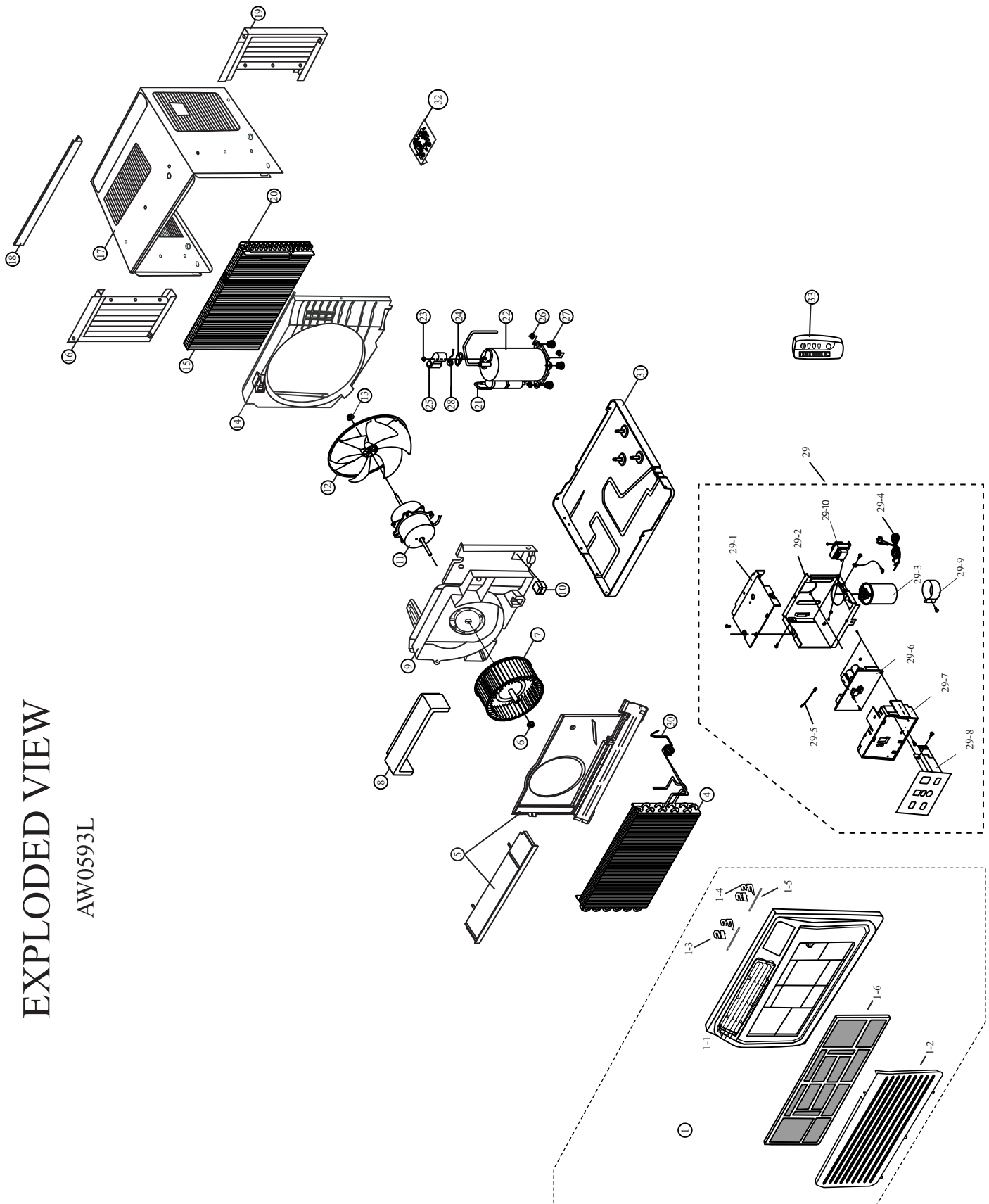


## 6. Exploded View and Parts List

### 6-1 Main unit



## Exploded View and Parts List

## ■Part List

No	Description	Code No.	Specification	Q'TY	
				AW0593L	REMARK
1	ASSY PANEL FRONT	DB92-00516A	SEA	1	
1-1	PANEL FRONT	DB64-00902A	SEA-2004	1	
1-2	GRILLE AIR INLET	DB64-00903A	SEA	1	
1-3	BLADE V-S	DB66-00663A	HIPS,T2.0,-,-	2	
1-4	BLADE V-L	DB66-00546A	HIPS,T2.0,-,-	2	
1-5	LINK BLADE	DB66-00368A	PP,L82,T1.3,-,	2	
1-6	GUARD AIR FILTER	DB63-00806A	HIPS,T2.5,-,	1	
2	CASE CONTROL UP	DB61-00933A	Y-PJT,SGCC-M,T0.7	1	
4	EVAPORATOR	DB96-01972A	FP1.3,T3,2*10,W	1	
5	ASSY-PLATE EVAP CASING	DB90-00898A	Y-PJT,ASSY	1	
6	NUT-FRANGE	DB60-30004A	2C M6 SM20C NTR	1	
7	BLOWER	DB67-00099A	ABS,-,OK_TOP-P/J	1	
8	ASSY-EVAP CASE UP	DB90-00944A	Y-PJT,ASSY	1	
9	ASSY PARTITION	DB94-00438A	Y-PJT,ASSY	1	
10	INSULATION-TUBE	DB72-50178A	T30,W36,L34,NBR	1	
11	MOTOR	DB31-00035K	YGN50-6K,Y-TOP(5K)	1	
12	FAN-PROPELLER	DB67-00014A	ABS,290,6 BLADE	1	
13	NUT-FRANGE	DB60-30020A	M6,LEFT	1	
14	CASE COND	DB61-00932A	PP,T2,W378,L308	1	
15	ASSY-COND	DB96-02044A	2R*15S,FP1.5	1	
16	ASSY SHUTTER-LF	DB92-00336A	PVC,SC-94445R	1	
17	ASSY CABINET	DB90-01289B	Y-PJT,TOP	1	
18	SHUTTER-ANGLE UP	DB64-00518A	SECC-P,T1,W8	1	
19	ASSY SHUTTER-RH	DB92-00337A	PVC,SC-94445R	1	
20	TUBE DISCHARGE	DB62-01349A	C1220T-0	1	
21	TUBE SUCTION	DB62-01314A	C1220T-0	1	
22	COMPRESSOR	39A050HSAKA	115V 60Hz 1Ph	1	
23	NUT-TERMINAL COVER	DB60-30001A	M5,-,SM20C	1	
24	GASKET	DB63-00765A	EPDM,T0.8	1	
25	COVER-TERMINAL	DB63-00762A	GE,-,NORYL,-,SEI-701	1	
26	NUT WASHER	DB60-30028A	M8,ZPC	3	
27	GROMMET-ISOLATOR	DB63-00764A	EPDM,-,BLK,OK-PJT	3	
28	O.L.P	DB35-00022C	39A050HSAKA	1	
29	ASSY CONTROL BOX	DB93-02550A	5K ELEC	1	
29-1	CASE CONTROL LOW	DB61-00934A	Y-PJT,SGCC-M,T0.7,	1	
29-2	CASE CONTROL UP	DB61-00933A	Y-PJT,SGCC-M,T0.7,W	1	
29-3	C-OIL(COMP&FAN)	2501-001290	3.5/35UF	1	
29-4	POWER CORD	DB39-00958A	Y-TOP,ELEC.,UL,P	1	
29-5	TRANSFORMER	DB26-00006G	AC115V,50/60HZ	1	
29-6	ASSY MAIN PCB	DB93-02480B	Y-P/J,SSEC	1	
29-7	PANEL CONTROL	DB64-00904A	ABS,T2.0,	1	
29-8	SWITCH MEMBRANE	DB34-00030A	PE,-,40~350	1	
29-9	CLIP CAPACITOR	DB65-00031A	SGCC-M,T0.45	1	
29-10	THERMISTOR	DB32-10051D	10K/25,-,3425K	1	
30	TUBE CAPILLARY	DB62-02153A	1.2*900mm	1	
31	ASSY BASE	DB90-00897A	MSWR10,M8,L10	1	
32	ASSY-SCREW	DB97-90014K	OK-P/J	1	
33	ASSY REMOCON	DB93-01364X	OK-PJT,ARC-735	1	

### 6-3 Main unit



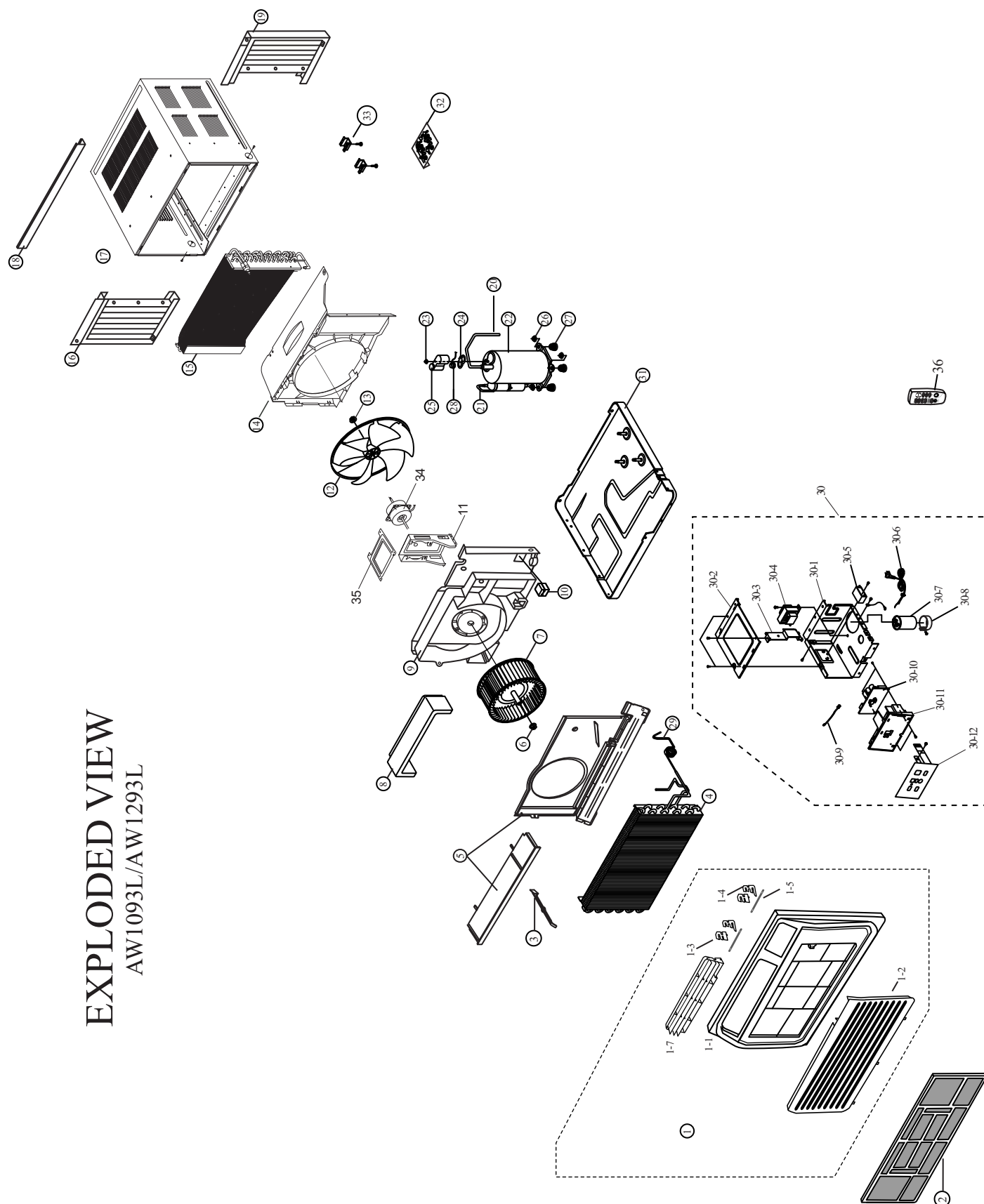
## Exploded View and Parts List

## ■Part List

No	Description	Code No.	Specification	Q/TY		
				AW0693L	AW0893L	REAMRK
1	ASSY PANEL FRONT	DB92-00515B	ASSY,SEA	1	1	
1-1	PANEL FRONT	DB64-00916A	H1-P/J,HIPS,T2.0	1	1	
1-2	GRILLE AIR INLET	DB64-00917A	H1-P/J,HIPS,T2.0	1	1	
1-3	BLADE V-S	DB66-00556A	H1-P/J,PP,T2.0	1	1	
1-4	BLADE V-L	DB66-00555A	H1-P/J,PP,T2.0	2	2	
1-5	LINK BLADE	DB66-00558A	H1-PJT,PP,L106.5	2	2	
1-6	GUARD AIR FILTER	DB63-00810A	H1-P/J,HIPS,T2.5	1	1	
1-7	FRAME BLADE	DB61-01530A	H1-P/J,SEA,HIPS	1	1	
2	LEVER DAMPER	DB66-00557A	H1-P/J,ABS	1	1	
4	EVAPORATOR	DB96-02987A	R2*11*FP1.2SLIT	1	1	
5	ASSY-PLATE EVAP CASING	DB90-01257A	H1-P/J,ASSY	1	1	
6	NUT-FRANGE	DB60-30004A	2C M6 SM20C NTR	1	1	
7	BLOWER	DB67-50078A	ABS,-,N-P/J	-	1	
		DB67-00099A	ABS,-,OK_TOP-P/J	1	-	
8	ASSY-EVAP CASE UP	DB90-01266A	H1-PJT	1	1	
9	ASSY PARTITION	DB94-00416A	H1-P/J	1	1	
10	INSULATION-TUBE	DB73-00177A	NBR-FOAM	1	1	
11	MOTOR	DB31-00215A	YSK40-6S-1,H1-PJT	-	1	
		DB31-00215B	YSK40-6S-2,H1-PJT	1	-	
12	FAN-PROPELLER	DB67-50077A	ABS,290	1	1	
13	NUT-FRANGE	DB60-30020A	M6,-,FEFZY,LF	1	1	
14	CASE COND	DB61-01532A	H1-P/J,PP,T2.0,W448	1	1	
15	ASSY-COND	DB96-02986A	7.0-2*16,1.3	1	1	
16	ASSY SHUTTER-LF	DB92-00113C	H1-P/J,ASSY	1	1	
17	ASSY CABINET	DB90-01256A	H1-PJT	1	1	
18	SHUTTER-ANGLE UP	DB64-00048H	H1-P/J,HIPS,T3.0	1	1	
19	ASSY SHUTTER-RH	DB92-00112C	H1-P/J,ASSY	1	1	
20	TUBE DISCHARGE	DB62-02269A	C1220T-0,T0.7,OD7	-	1	
		DB62-02527A	C1220T-0,T0.7,OD7	1	-	
21	TUBE SUCTION	DB62-02270A	C1220T-0,T0.7,OD9.52	-	1	
		DB62-02528A	C1220T-0,T0.7,OD9.52	1	-	
22	COMPRESSOR	44A076HUAEB	1PH,115V/60Hz	-	1	
		39A062HSAEA	1PH,115V/60Hz	1	-	
23	NUT-TERMINAL COVER	DB60-30001A	M5,-,SM20C	1	1	
24	GASKET	DB63-00765A	EPDM,0.8,-,-,65-70,	1	1	
25	COVER-TERMINAL	DB63-00762A	GE NORYL	1	1	
26	NUT WASHER	DB60-30028A	HEX 2C M8 ZPC	3	3	
27	GROMMET-ISOLATOR	DB63-00763A	44A,NR35	-	3	
		DB63-00764A	39,NR35	3	-	
28	O.L.P	DB35-00022B	39A062HSAEA	1	-	
		DB35-00024A	39A062HSAEA	-	1	
29	ASSY REMOCON	DB93-01364X	OK-PJT,ARC-735	1	1	
34	ASSY CONTROL CASE	DB93-02487A	AW0893L	-	1	
		DB93-02487B	AW0693L	1	-	
34-1	CASE CONTROL LOW	DB61-01535A	H1-P/J,SGCC-M,T0	1	1	
34-2	CASE CONTROL UP	DB61-01536A	H1-P/J,SGCC-M,T0	1	1	
34-3	BRK CONTROL	DB61-01533A	H1-P/J,SGCC-M,T1.0,	1	1	
34-4	TRANSFORMER	DB26-00006J	-,AC115V,50/60HZ,DC	1	1	
34-5	C-OIL(FAN MOTOR)	2301-001448	8000nF,+10-5%,440V	-	1	
		2301-001449	6000nF,+10-5%,440V	1	-	
34-6	POWER CORD	DB39-00343D	125V,13A,-,-	1	1	
34-7	C-OIL(COMPRESSOR)	2501-001230	45uF,400V,BK	-	1	
		2501-001229	40uF,400V,BK	1	-	
34-8	CLIP-CAPACITOR	DB65-00031A	SGCC-M,T0.45	1	1	
34-9	THERMISTOR	DB32-10051E	10K/25,-,3435K,	1	1	
34-10	ASSY MAIN PCB	DB93-02478C	H,SEA	1	1	
34-11	PANEL CONTROL	DB64-00918A	H1-P/J,ABS,T2.0,W90	1	1	
34-12	SWITCH MEMBRANE	DB34-00031A	PE,SEA	1	1	
30	TUBE CAPILLARY	DB62-02280A	1.3×800mm	1	1	
31	ASSY BASE	DB90-01255A	H1-P/J	-	1	
		DB90-01255B	AW0693L	1	-	
32	ASSY-SCREW	DB97-30156C	SPS/GEA,	1	1	
33	BRACKET INSTALL	DB61-30219F	GE,SPS-P/J,SGCC-A	2	2	

## 6. Exploded View and Parts List

### 6-5 Main unit



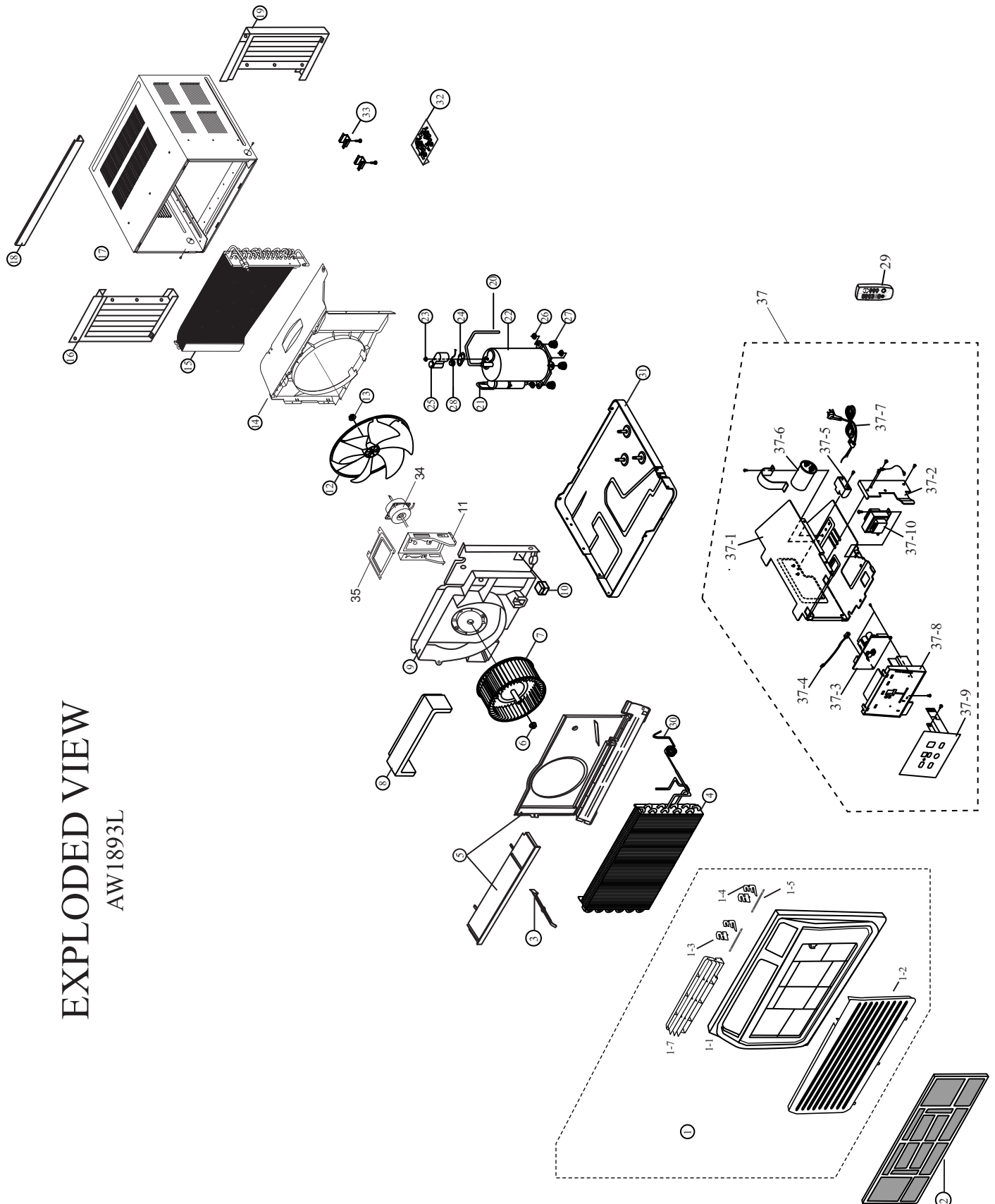
## Exploded View and Parts List

## ■Part List

No	Description	Code No.	Specification	Q'TY		
				AW1093L	AW1293L	REMARK
1	ASSY PANEL FRONT	DB92-00553C	ASSY,SEA	1	1	
1-1	PANEL FRONT	DB64-00924A	H2-P/J,HIPS,T2.0,W393,L	1	1	
1-2	GRILLE AIR INLET	DB64-00925A	H2-P/J,HIPS,T2.5	1	1	
1-3	BLADE V-S	DB66-00561A	H2-P/J,PP,T2.0	2	2	
1-4	BLADE V-L	DB66-00560A	H2-P/J,PP,T2.0,-,-,-	2	2	
1-5	LINK BLADE	DB66-00562A	H2-PJT,TOP,PP,L106	2	2	
1-7	FRAME BLADE	DB61-01538A	H2-P/J,TOP,SEA,HIPS	1	1	
2	GUARD AIR FILTER	DB63-00813A	H2-P/J,HIPS,T2.5	1	1	
3	LEVER DAMPER	DB66-00559A	H2-P/J,HIPS	1	1	
4	EVAPORATOR	DB96-02926A	OD7*2R*12*FP1.5*470	1	-	
		DB96-02939A	OD9.52*2*10*FP1.3*4	-	1	
5	ASSY-PLATE EVAP CASING	DB90-01286A	H2-P/J,ASSY	1	1	
6	NUT-FRANGE	DB60-30004A	M6 SM20C NTR	1	1	
7	BLOWER	DB67-50073A	ABS,200	-	1	
		DB67-50078A	ABS,_180	1	-	
8	ASSY-EVAP CASE UP	DB90-01342A	H2-P/J,-	1	1	
9	ASSY PARTITION	DB97-02047A	PP,T2.5	1	1	
10	INSULATION-TUBE	DB73-00178A	H2-PJT,FOAM-PE	1	1	
11	MOUNT MOTOR ASSY	DB90-01420A	H2-PJT TOP	1	1	
12	FAN-PROPELLER	DB67-00139A	ABS+G.F20%,D352	1	1	
13	NUT-FRANGE	DB60-30020A	M6,-,FEFZY,LF	1	1	
14	CASE COND	DB61-01537A	H2-P/J,PP,T2.5	1	1	
15	ASSY-COND	DB96-02940A	3R*OD7*17*FP1.5*SLIT	1	-	
		DB96-02940B	3R*OD7*17*FP1.4*LOVER	-	1	
16	ASSY SHUTTER-LF	DB92-00111A	J-P/J,ASSY	1	1	
17	ASSY CABINET	DB90-01284A	H2-PJT,-	1	1	
18	SHUTTER-ANGLE UP	DB64-00048J	-,HIPS,T3.0,-,-,SC	1	1	
19	ASSY SHUTTER-RH	DB92-00110A	J-P/J,ASSY	1	1	
20	TUBE DISCHARGE	DB62-02287A	H2-P/J,C1220T-0,TO.7	1	1	
21	TUBE SUCTION	DB62-02213A	H2-P/J,C1220T-0	1	1	
22	COMPRESSOR	44B098HX1EF	1Ph,115V/60Hz	1	-	
		44B117HX1EL	1Ph,115V/60Hz	-	1	
23	NUT-TERMINAL COVER	DB60-30001A	M5,-,SM20C,-	1	1	
24	GASKET	DB63-20003A	EPDM,T0.8	1	1	
25	COVER-TERMINAL	DB63-10026A	GE,-,NORYL,-,SEI-701	1	1	
26	NUT WASHER	DB60-30028A	HEX 2C M8 ZPC	3	3	
27	GROMMET-ISOLATOR	DB73-00070A	NR35	3	3	
28	O.L.P	DB35-00011D	44B098HX1EF	1	-	
		DB35-00011M	44B117HX1EL	-	1	
30	ASSY CONTROL BOX	DB93-02520A	AW1093L	1	-	
		DB93-02520B	AW1293L	-	1	
30-1	CASE CONTROL LOW	DB61-00669B	H2-PJT TOP,SGCC-M,	1	1	
30-2	CASE CONTROL UP	DB61-00670A	8K TOP,SGCC-M,T0.7,	1	1	
30-3	BRK CONTROL	DB61-00676A	TOP,N-PROJECT,SGCC-	1	1	
30-4	TRANSFORMER	DB26-00006J	-,AC115V,50/60HZ,DC	1	1	
30-5	C-OIL(FAN MOTOR)	2301-001452	15000nF,+10-5%,250V,	1	1	
30-6	POWER CORD	DB39-00343E	-,,-,125V,13A,AWG	1	1	
30-7	C-OIL(COMPRESSOR)	2501-001230	45uF,400V,BK	1	-	
		2501-001231	50uF,400V,BK	-	1	
30-8	CLIP-CAPACITOR	DB65-00031A	SGCC-M,T0.45,-,-,OK-	1	1	
30-9	THERMISTOR	DB32-10051E	-,10K/25,-,3435K,-,-,-,-	1	1	
30-10	ASSY MAIN PCB	DB93-02478C	H,SEA	1	1	
30-11	PANEL CONTROL	DB64-00929A	H2-P/J,ABS,-,W79.8,	1	1	
30-12	SWITCH MEMBRANE	DB34-00032A	-,,-,PE,-,-,40~350	1	1	
29	TUBE CAPILLARY	DB96-03453A	2-ID1.2*900	-	1	
		DB62-02367B	2-ID1.2*1000	1	-	
31	ASSY BASE	DB90-01285B	H2-P/J,44 FRAME	1	1	
32	ASSY-SCREW	DB97-30156C	-,,-,-,-,-,SPS/GEA,	1	1	
33	BRACKET INSTALL	DB61-30219F	GE,SPS-P/J,SGCC-A	2	2	
34	MOTOR FAN	DB31-00211A	YGN60-6B-1	-	1	
		DB31-00211B	YGN60-6B-2	1	-	
35	PLATE REINF	DB70-00367A	H2-P/J,SGCC-M	1	1	
36	REMOCON ASSY	DB93-01364X	OK-PJT,ARC-735	1	1	

## 6. Exploded View and Parts List

### 6-7 Main unit



## Exploded View and Parts List

## ■Part List

No	Description	Code No.	Specification	Q'TY	
				AW1893L	REMARK
1	ASSY PANEL FRONT	DB92-00519A	SEA,ASSY	1	
1-1	PANEL FRONT	DB64-00912A	H3-P/J,TOP,SEA,HIPS	1	
1-2	GRILLE AIR INLET	DB64-00913A	H3-P/J,TOP,SEA	1	
1-3	BLADE V-S	DB66-00551A	H3-P/JT,HIPS,T2.5,	1	
1-4	BLADE V-L	DB66-00550A	H3-P/JT,HIPS,T2.5	2	
1-5	LINK BLADE	DB66-00552A	H3-P/JT,TOP,PP,T1.3,	2	
1-7	FRAME BLADE	DB61-01524A	H3-P/J,TOP,SEA,HIPS	1	
2	GUARD AIR FILTER	DB63-00807A	H3-P/JT,SEA,TOP	1	
3	LEVER DAMPER	DB66-00553A	H3-P/J,TOP,SEA,ABS	1	
4	EVAPORATOR	DB96-02969A	OD9.52*R3*11HOLE	1	
5	ASSY-PLATE EVAP CASING	DB90-01288A	H3-P/J,ASSY	1	
6	NUT-FRANGE	6021-001056	HEX-PLANGE,M8XP1	1	
7	BLOWER	DB67-00096A	ABS+G/F20%,M-P/J	1	
8	CASE EVAP UP	DB61-01528A	H3-P/J,TOP,25F0AM-PS	1	
9	ASSY PARTITION	DB97-02027A	PP,T2.5,-,-,BLK,-,	1	
10	INSULATION-TUBE	DB73-00173A	H3-P/JT,TOP,NRB	1	
11	MOUNT MOTOR	DB61-01496A	H3-P/J,SGCC-M	1	
12	FAN-PROPELLER	DB67-00047B	ABS,OD390,-,-,M-P/J	1	
13	NUT-FRANGE	DB60-30028A	HEX 2C M8 ZPC	3	
14	CASE COND	DB61-01495A	H3-P/J,PP,T2.5	1	
15	ASSY-COND	DB96-02954B	H3-P/J,-	1	
16	ASSY SHUTTER-LF	DB92-00109A	M-P/J,ASS'Y	1	
17	ASSY CABINET	DB90-01217B	AW1803B/XAA,H3-P/JT	1	
18	SHUTTER-ANGLE UP	DB64-01020A	-,HIPS,T3.0,W41,L6	1	
19	ASSY SHUTTER-RH	DB92-00108A	M-P/J,ASS'Y	1	
20	TUBE DISCHARGE	DB62-02593A	H3-P/J,C1220T-0,TO.7	1	
21	TUBE SUCTION	DB62-02234A	H3-P/J,C1220T-0,TO.8	1	
22	COMPRESSOR	48D172IU1EQ	1PH,208-230V/60Hz	1	
23	NUT-TERMINAL COVER	DB60-30001A	M5,-,SM20C	1	
24	GASKET	DB63-20003A	EPDM,T0.8	1	
25	COVER-TERMINAL	DB63-10026A	GE,-,NORYL	1	
26	NUT WASHER	DB60-30028A	HEX 2C M8 ZPC	3	
27	GROMMET-ISOLATOR	DB73-00067A	EPDM	3	
28	O.L.P	DB35-00011K	48D172IU1EQ	1	
37	ASSY CONTROL BOX	DB93-02510A	AW1803B/XAA	1	
37-1	CASE CONTROL	DB61-01527A	H3-P/J,TOP,SGCC-M,T0.7	1	
37-2	BRACKET-CONTROL	DB61-01526A	H3-P/J,TOP,SGCC-M,T	1	
37-3	ASSY MAIN PCB	DB93-02478C	H,SEA	1	
37-4	THERMISTOR	DB32-10051E	-,10K/25,-,3435K,-,-,-,-	1	
37-5	CAPACITOR(6mfd)	2301-001449	6000nF,+10-5%,440V,B	1	
37-6	CAPACITOR(35mfd)	2501-001237	35uF,450V	1	
37-7	POWER-CORD	DB39-00344B	250V,13A,AWG	1	
37-8	PANEL-CONTROL	DB64-00911A	H3-P/J,TOP,SEA,ELEC	1	
37-9	MEMBRANE PAD	DB34-00033A	-,,-,PE,-,-,40~350	1	
37-10	TRANSFORMER	DB26-00006K	AC230V,50/60HZ,DC	1	
30	TUBE CAPILLARY	DB96-03422A	3-ID1.2*900	1	
31	ASSY BASE	DB90-01215B	H3-P/JT	1	
32	ASSY-SCREW	DB97-90014U	M-P/J,(XAX)	1	
33	BRACKET INSTALL	DB61-30219F	GE,SPS-P/J,SGCC-A,T	2	
34	MOTOR FAN	DB31-00214C	YSK160-6A-3,18K-C TOP	1	
35	PLATE REINF	DB70-00342A	H3-P/J,SGCC-M,-,T0.8	1	
29	REMOCON ASSY	DB93-01364X	SEA	1	